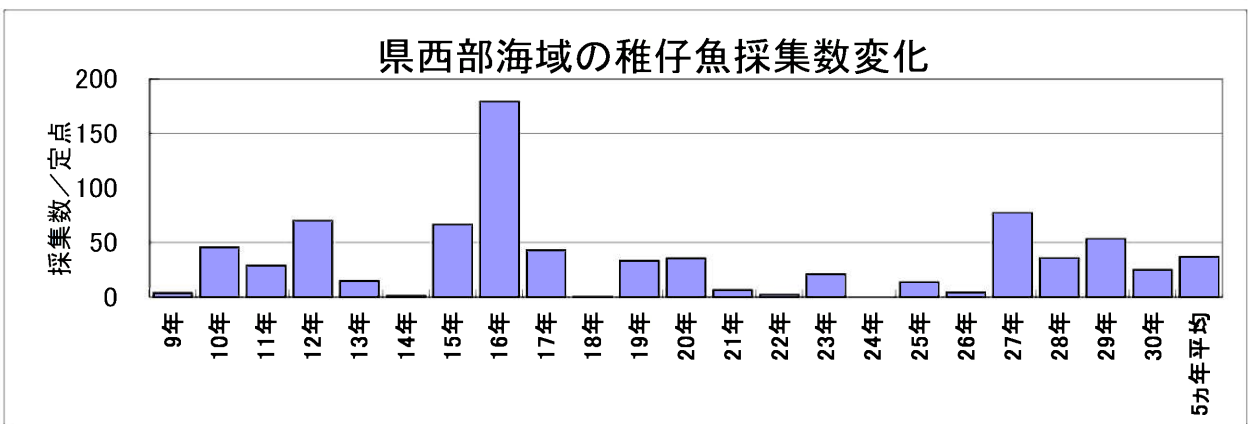
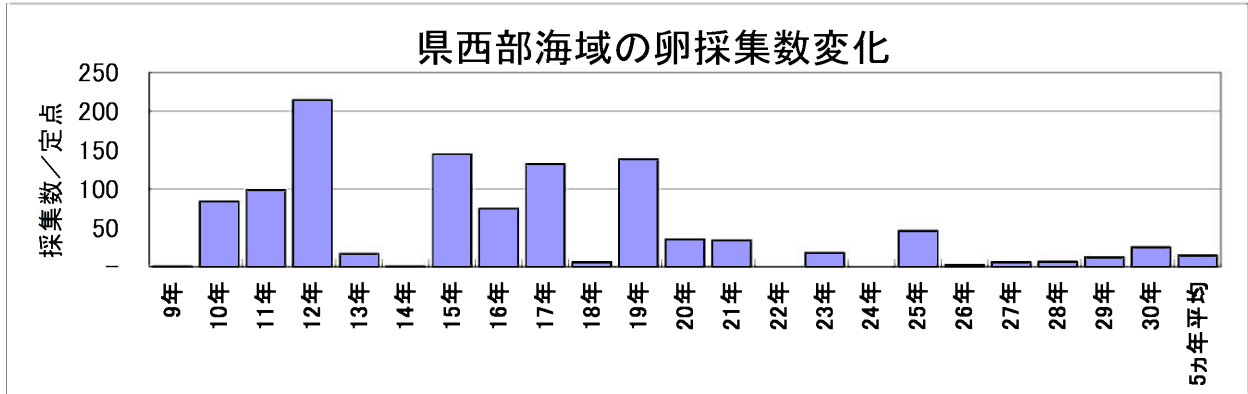
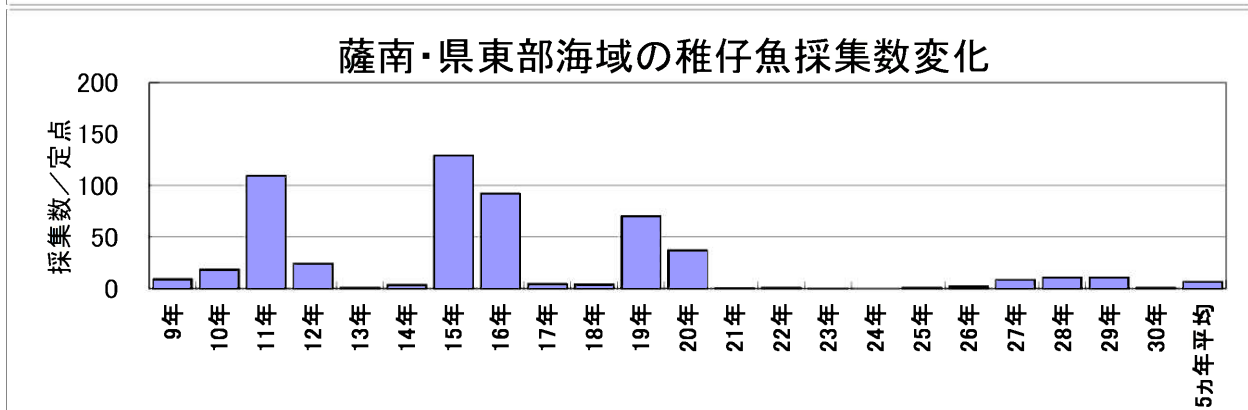
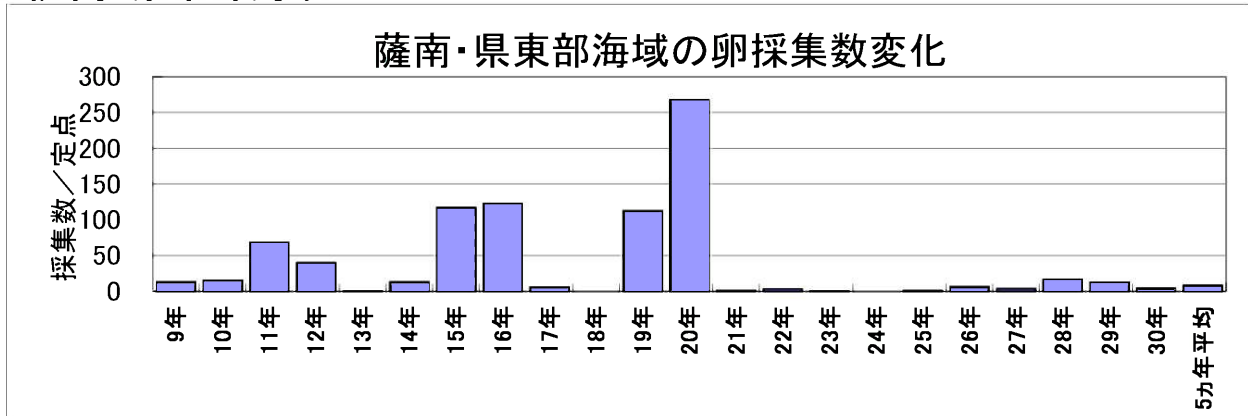


# 5月のカタクチイワシ卵・稚仔魚1定点当たりの採集数の経年変化

## ○県西部海域

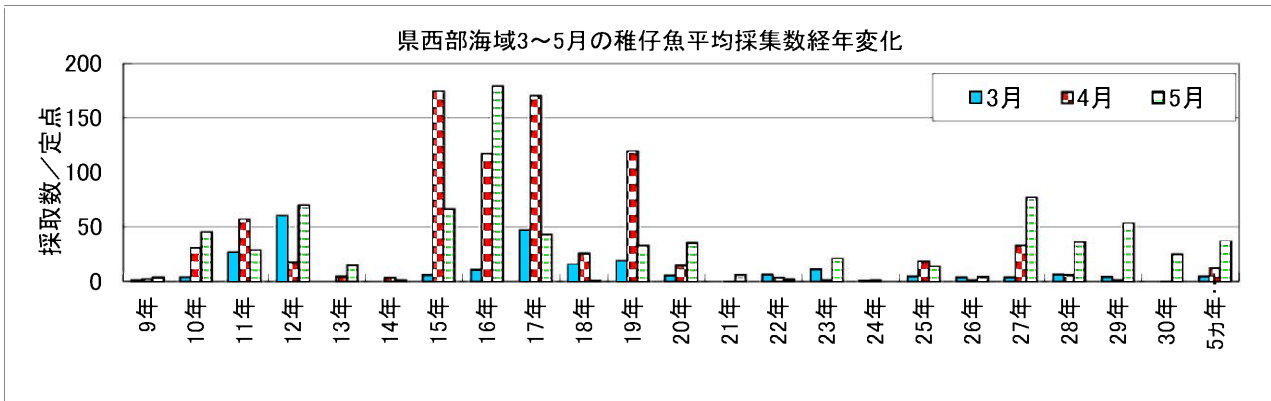
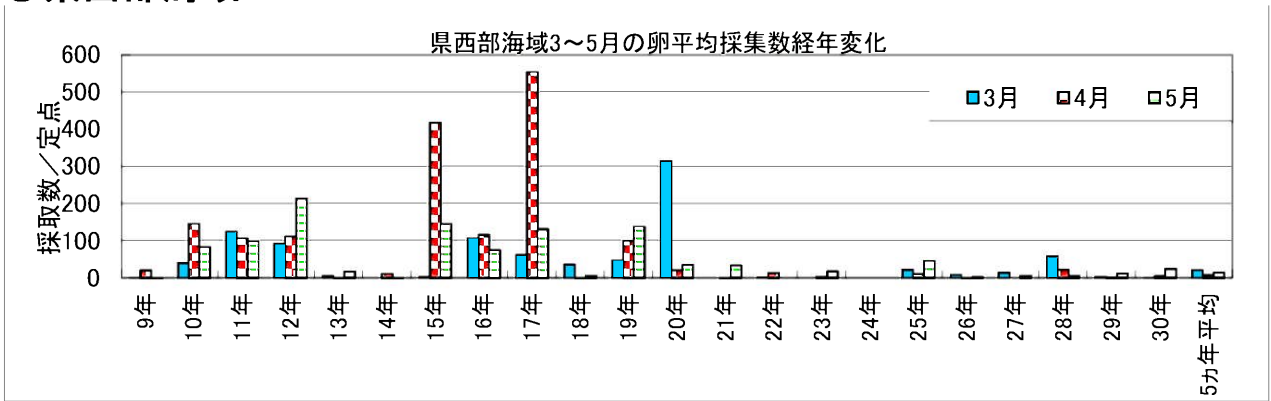


## ○薩南・県東部海域

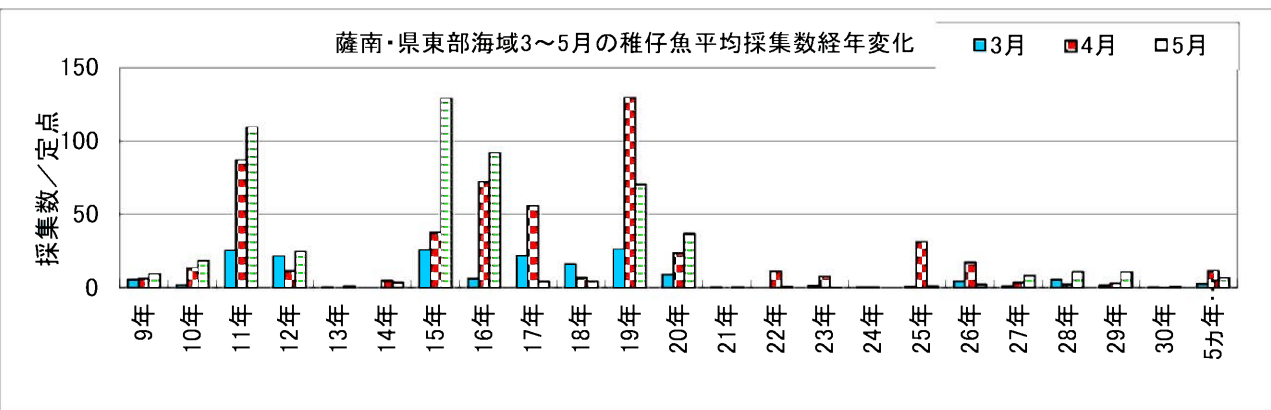
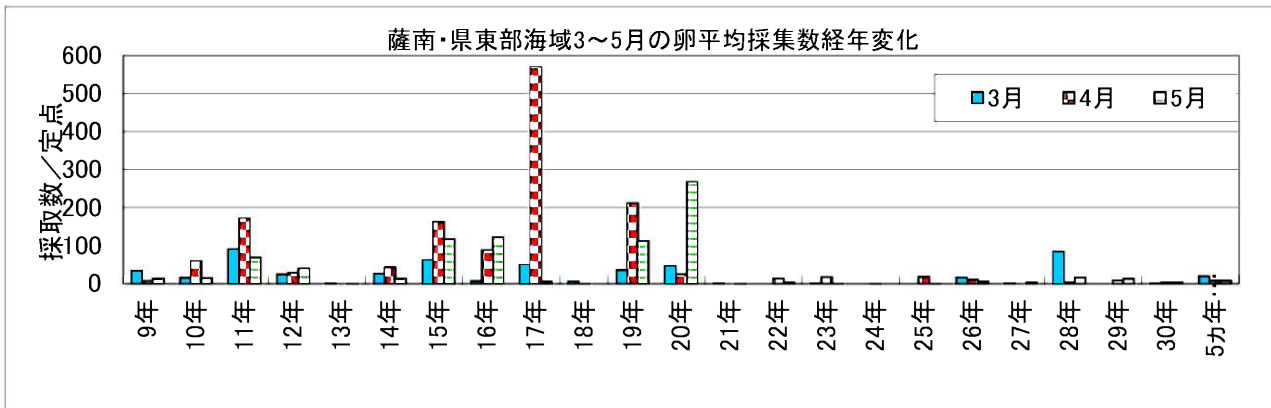


# 3～5月のカタクチイワシ卵・稚仔魚1定点当たりの採集数の経年変化

## ○県西部海域

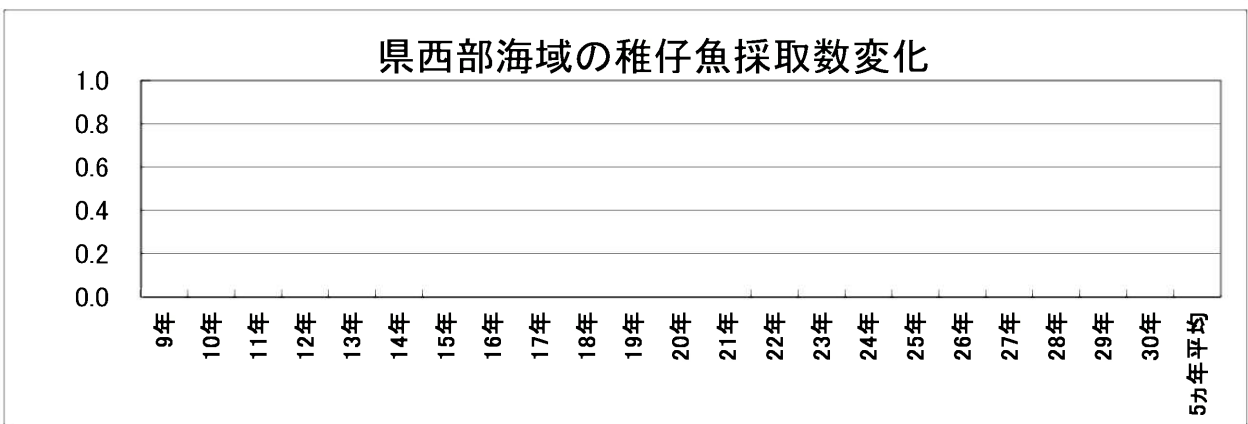
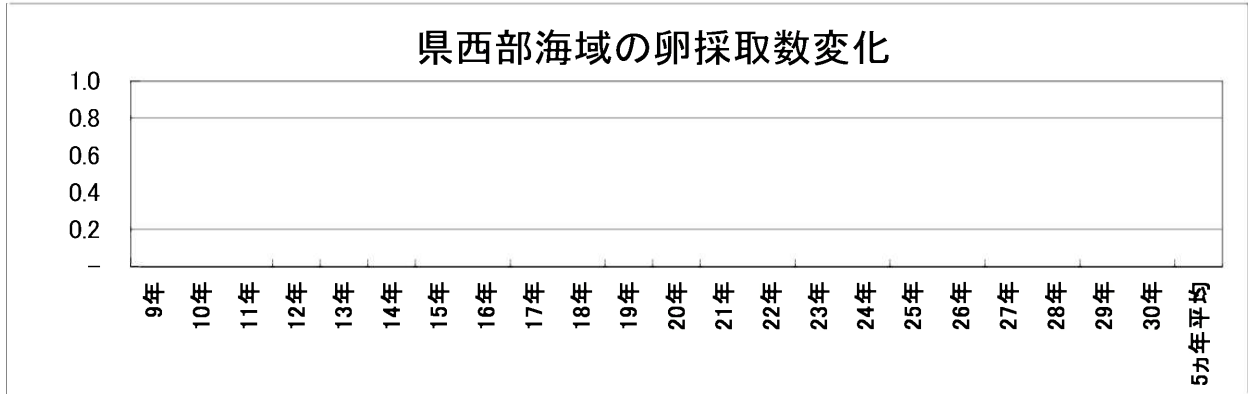


## ○薩南・県東部海域

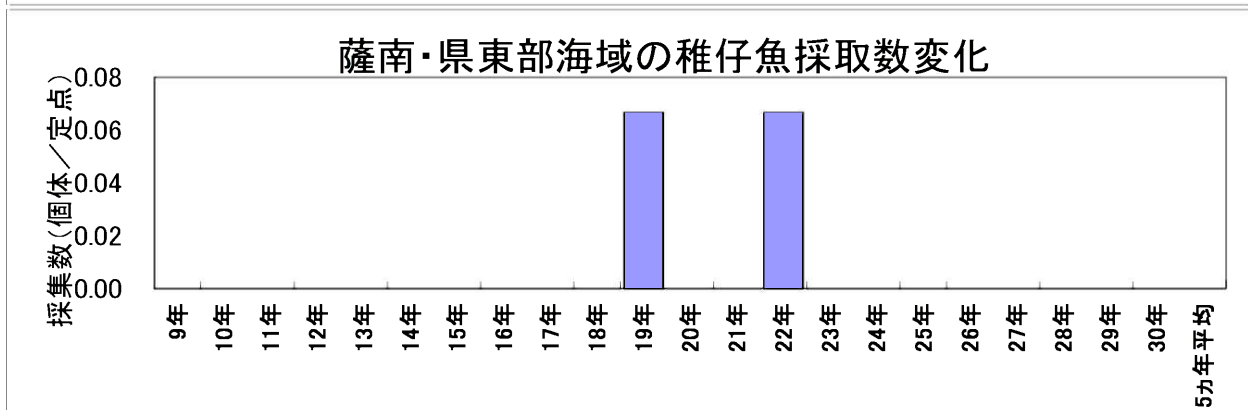
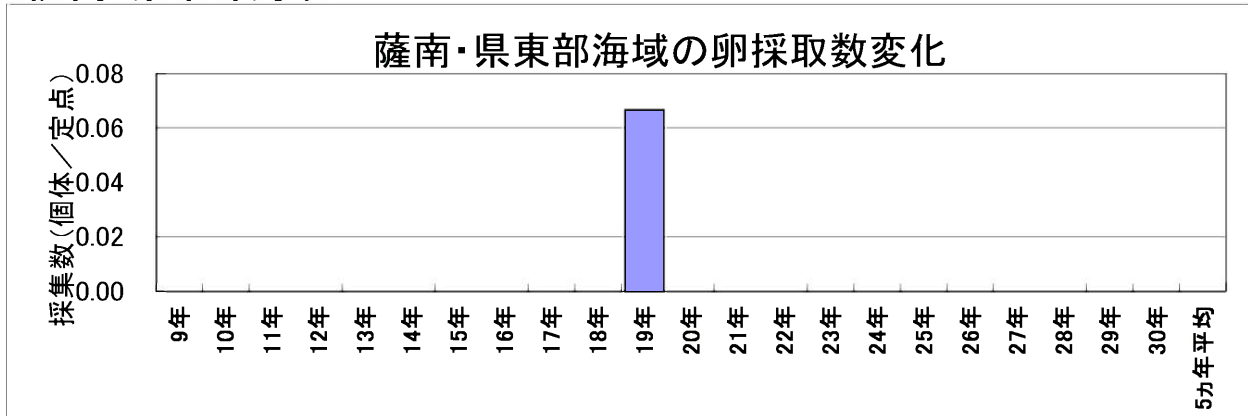


# 5月のマイワシ卵・稚仔魚1定点当たりの採集数の経年変化

## ○県西部海域

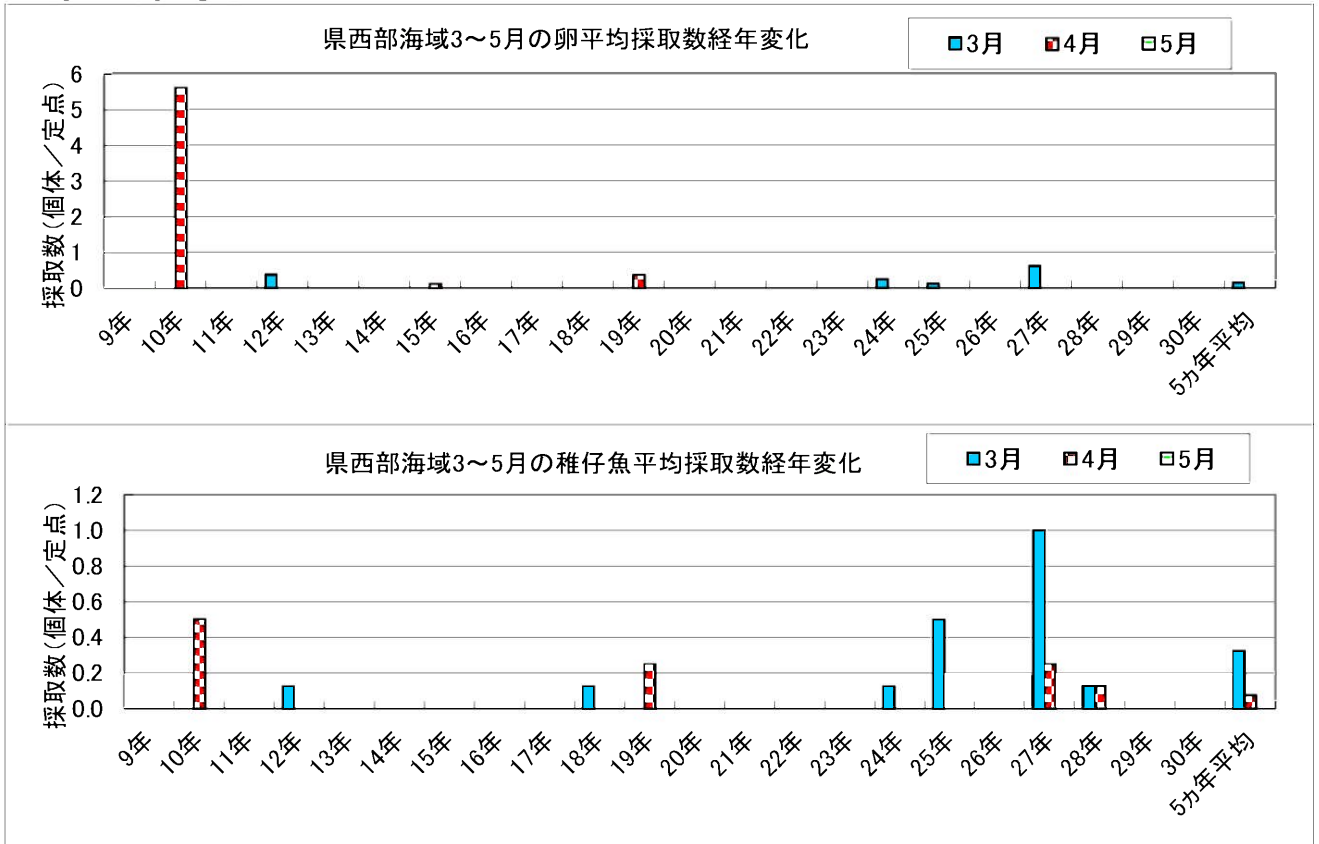


## ○薩南・県東部海域

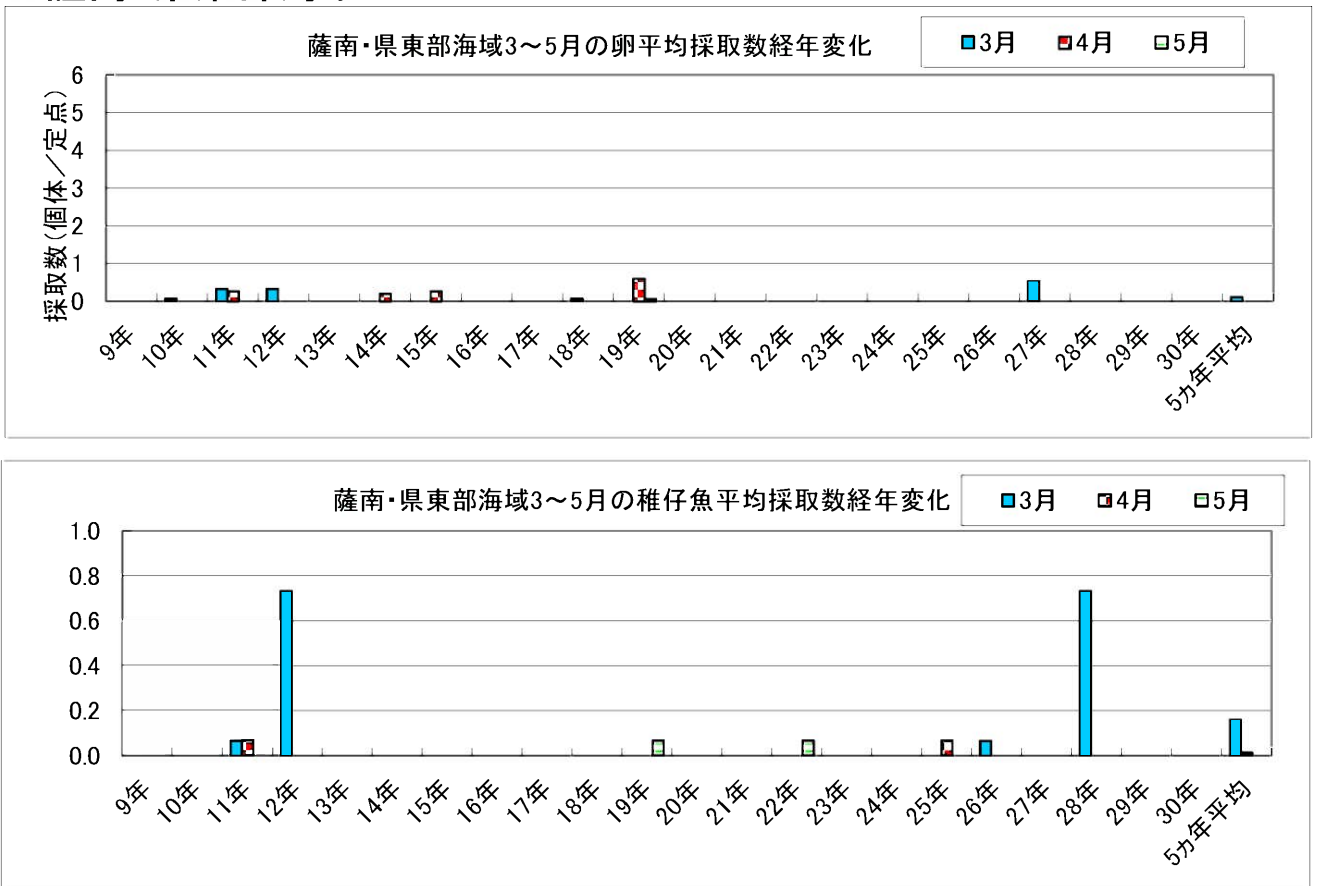


# 3～5月のマイワシ卵・稚仔魚1定点当たりの採集数の経年変化

## ○県西部海域

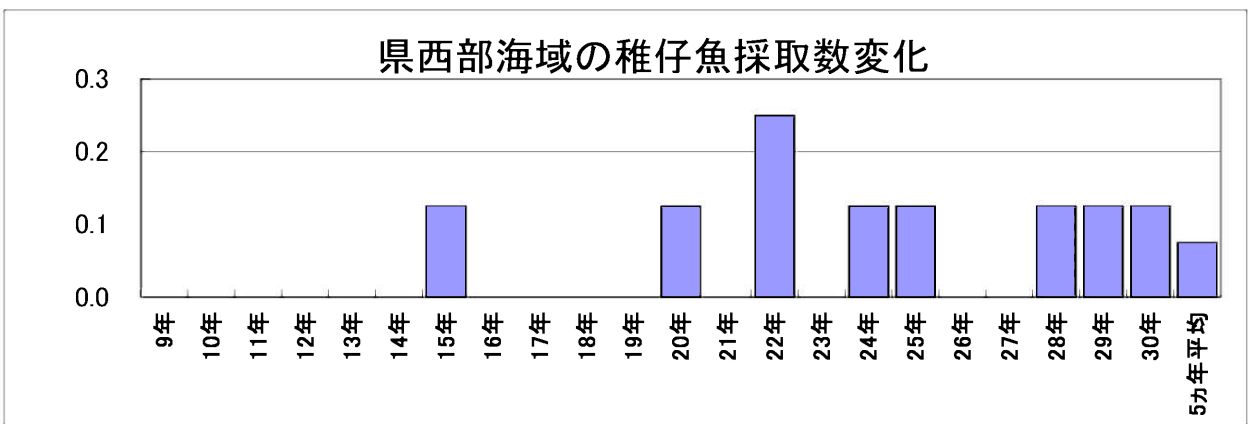
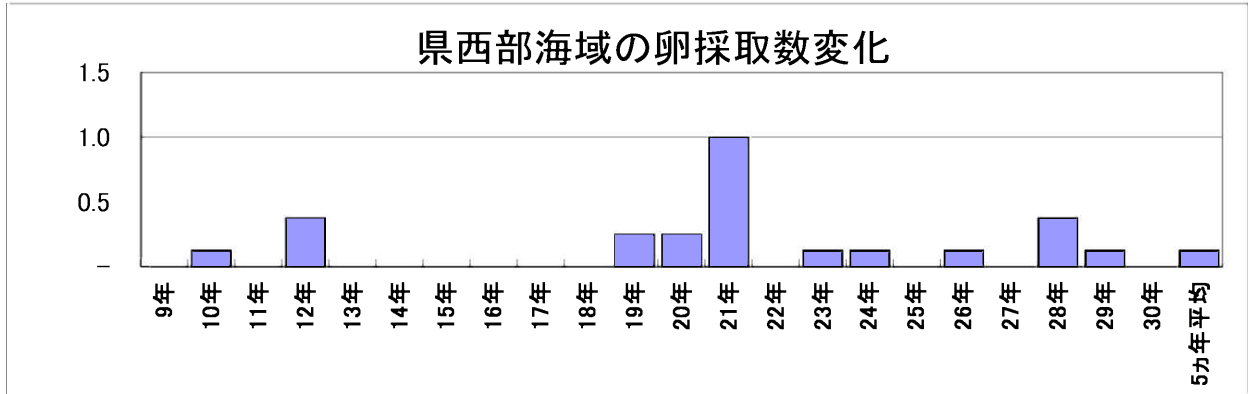


## ○薩南・県東部海域

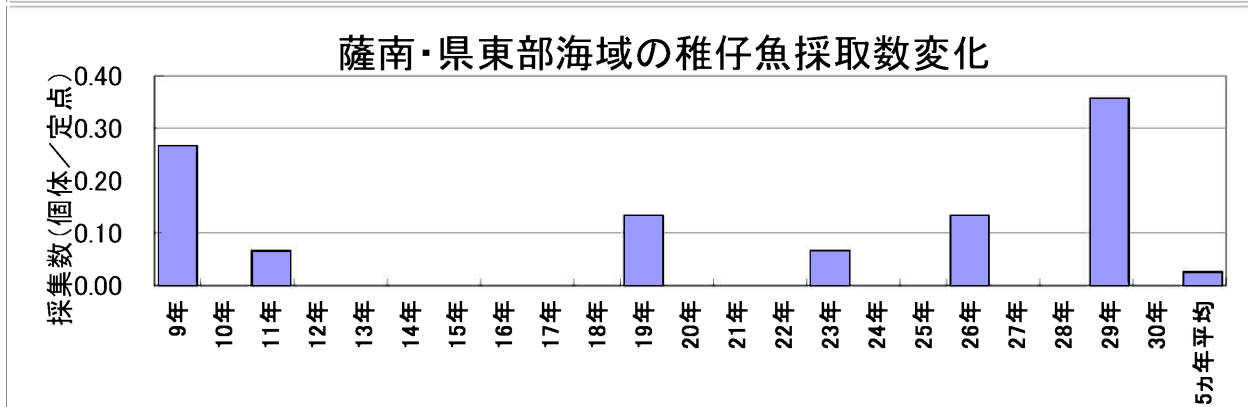
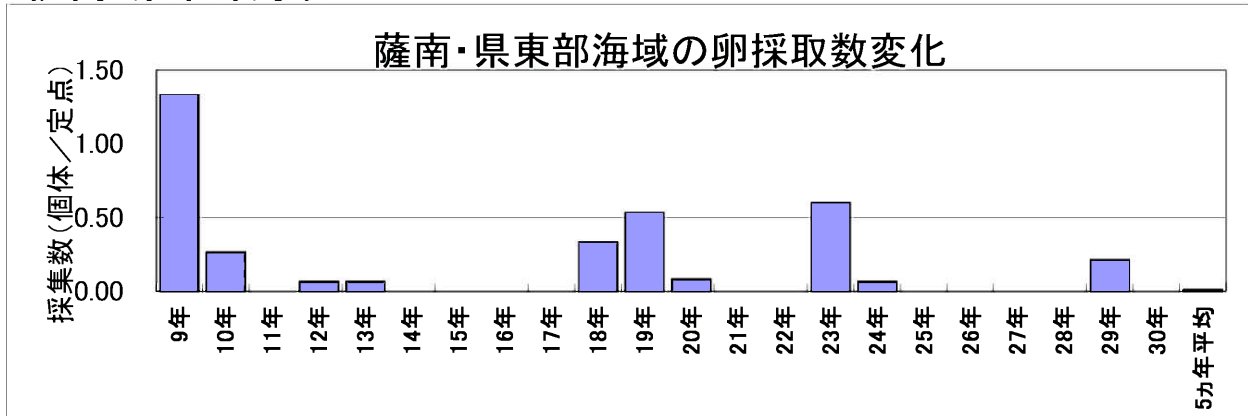


# 5月のウルメイワシ卵・稚仔魚1定点当たりの採集数の経年変化

## ○県西部海域

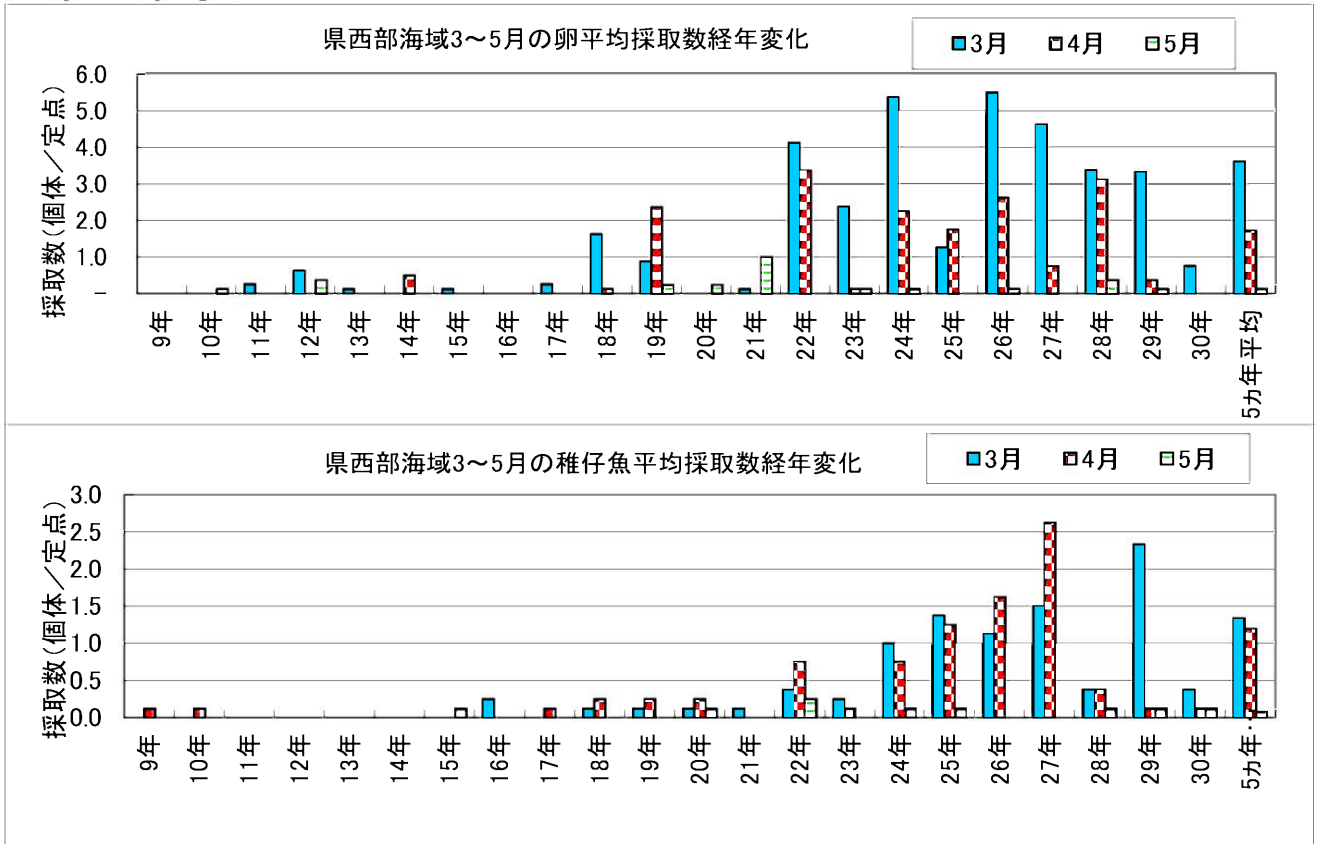


## ○薩南・県東部海域



# 3～5月のウルメイワシ卵・稚仔魚1定点当たりの採集数の経年変化

## ○県西部海域



## ○薩南・県東部海域

