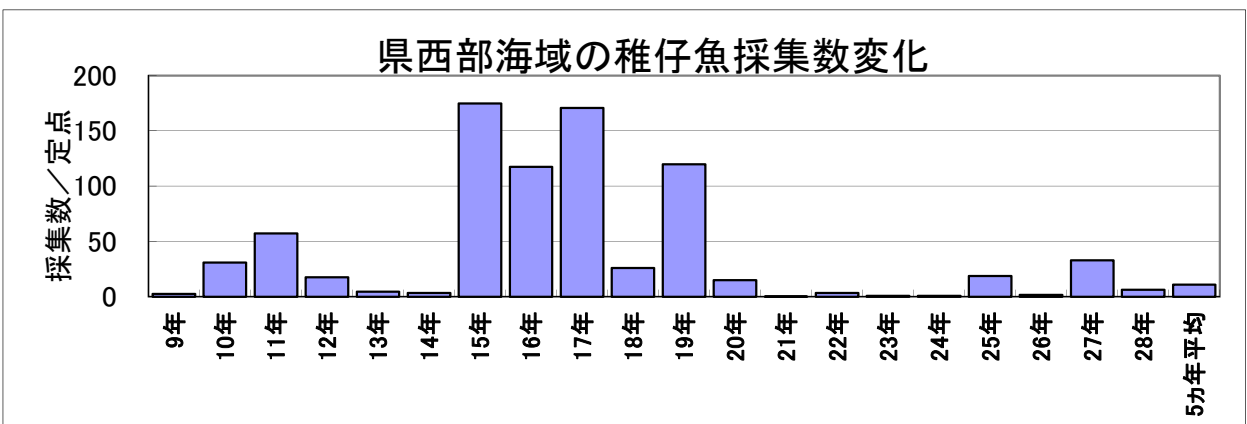
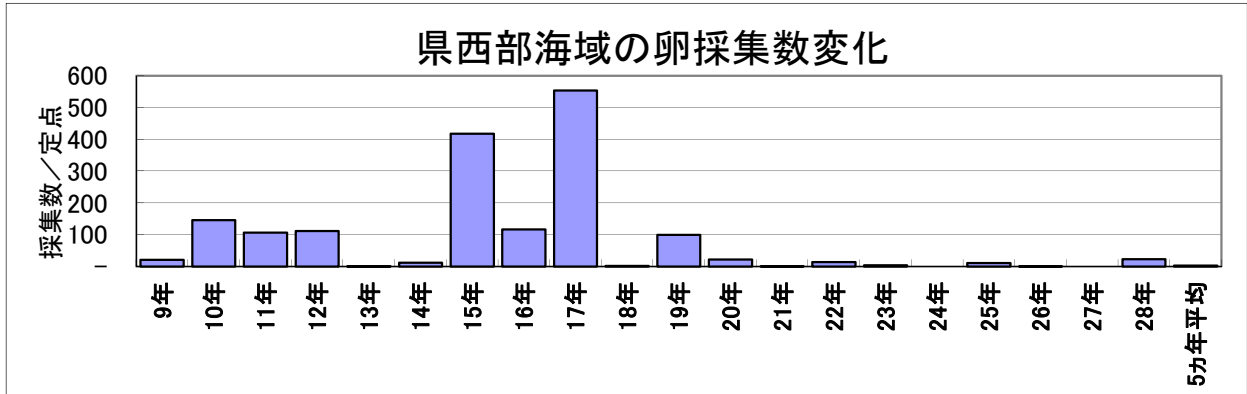
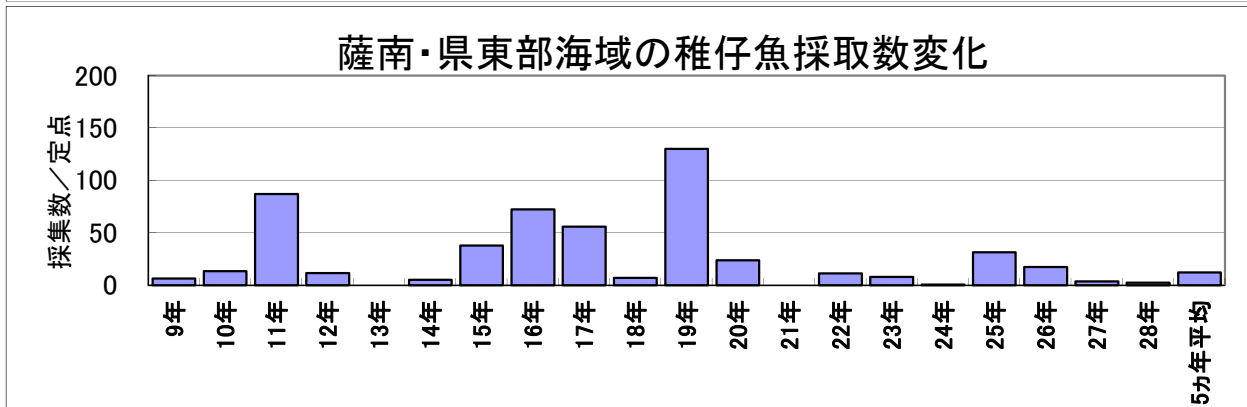
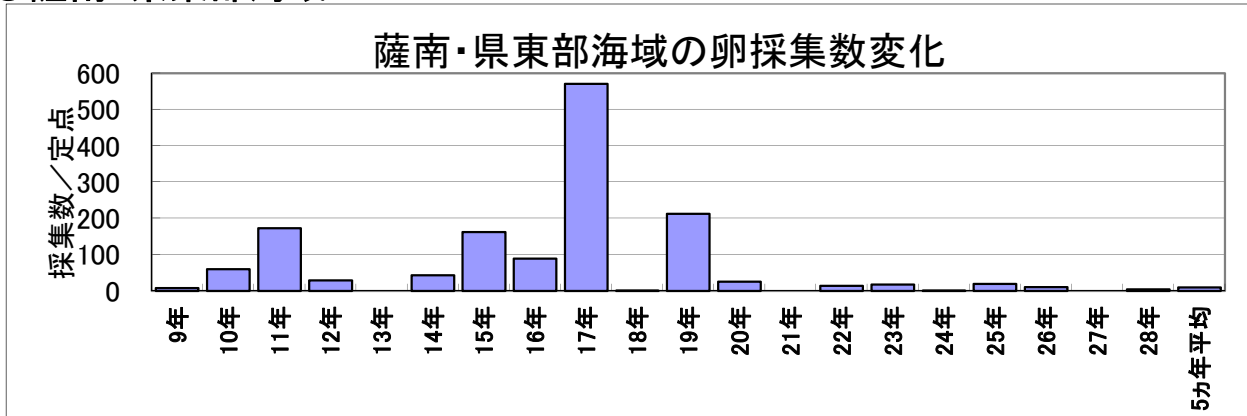


4月のカタクチイワシ卵・稚仔魚1定点当たりの採集数の経年変化

○県西部海域

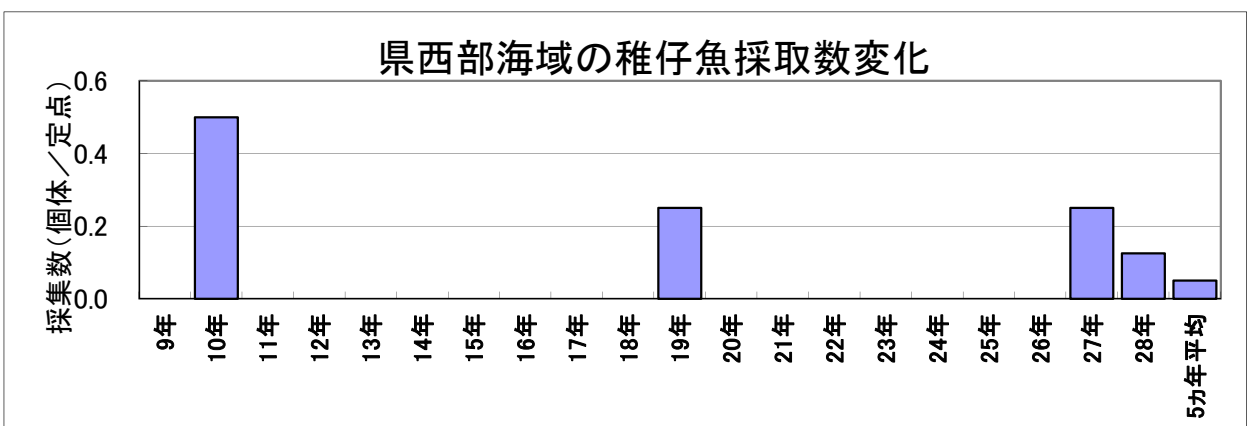
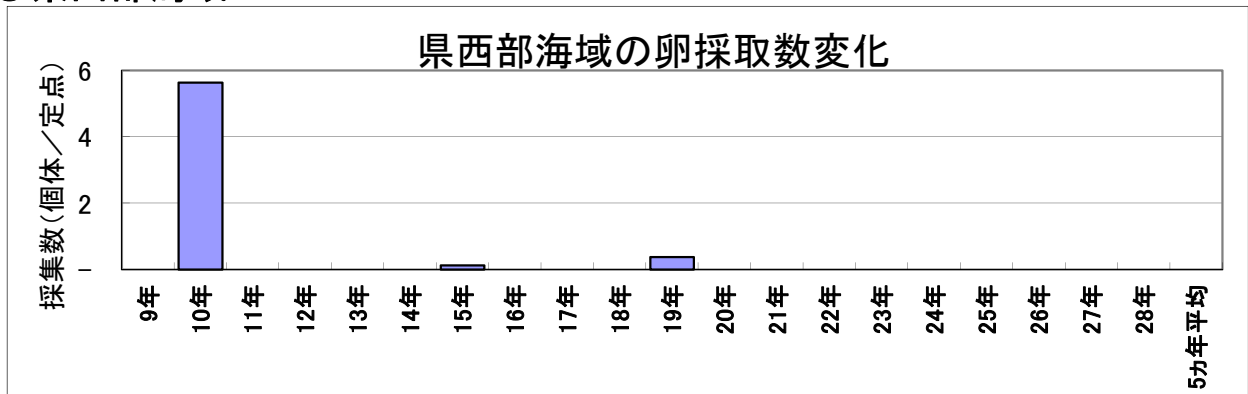


○薩南・県東部海域

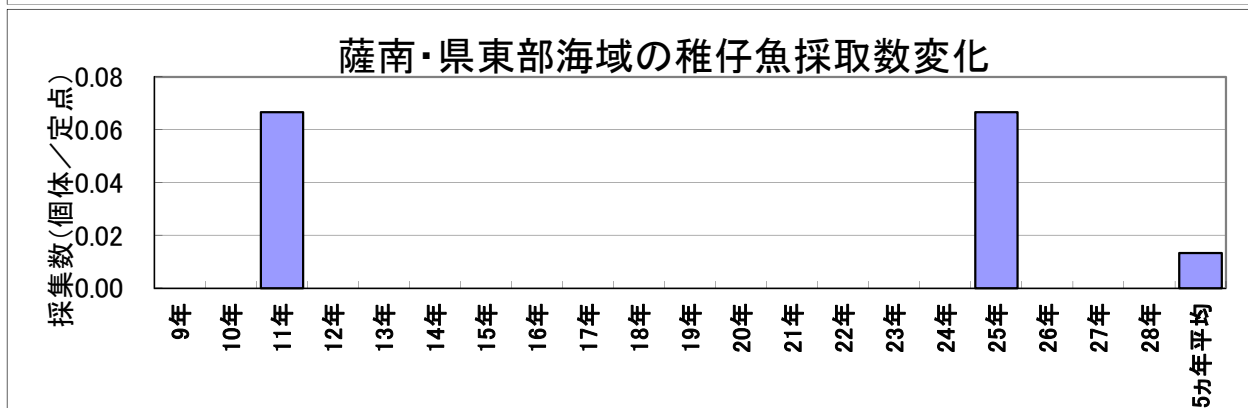
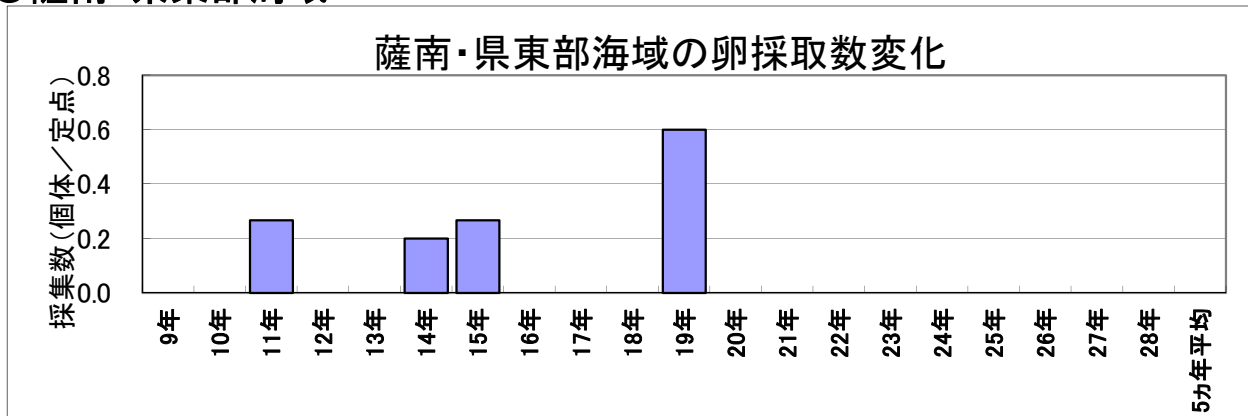


4月のマイワシ卵・稚仔魚1定点当たりの採集数の経年変化

○県西部海域

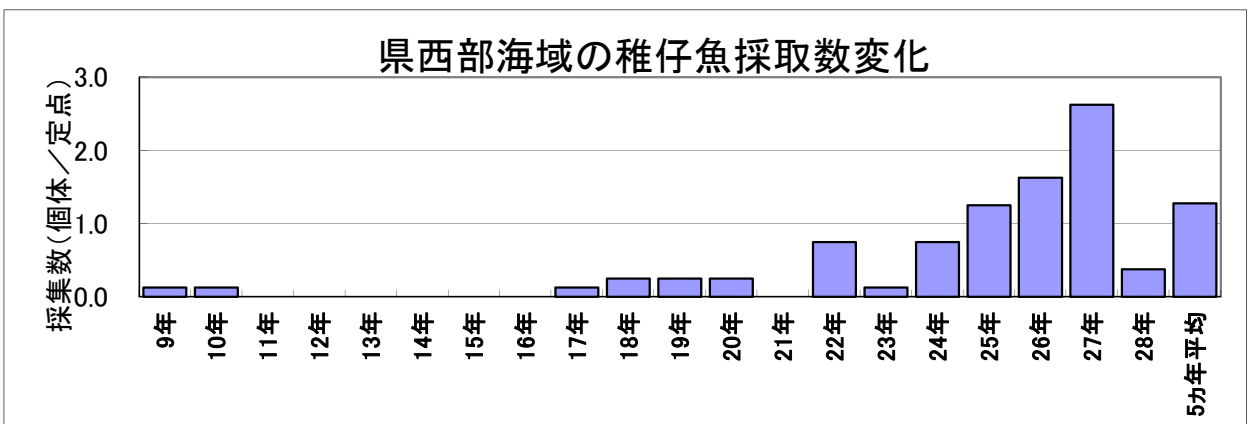
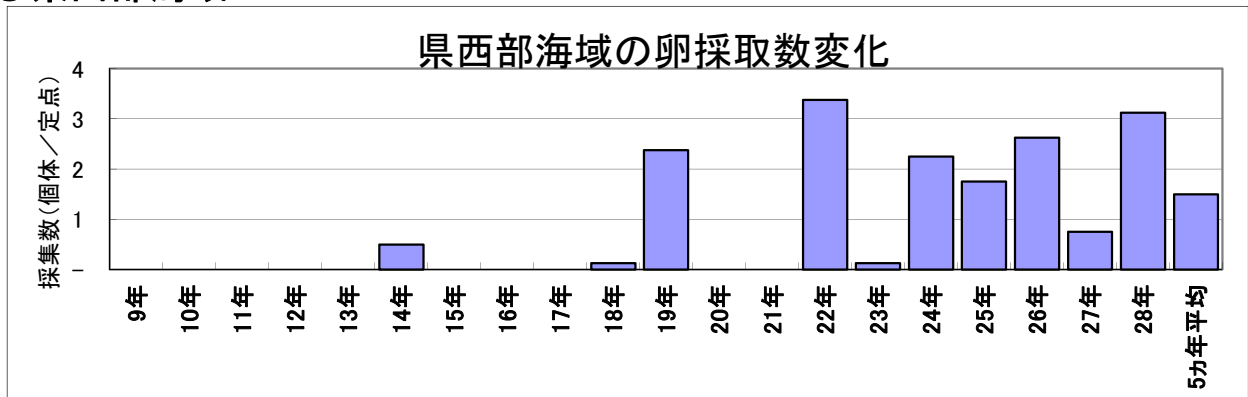


○薩南・県東部海域



4月のウルメイワシ卵・稚仔魚1定点当たりの採集数の経年変化

○県西部海域



○薩南・県東部海域

